

Established 1992



GEOGRID

Retaining Wall Systems, Incorporated



COLOR OPTIONS

Victorian



Toscana



Montecito



Empire



Autumn



Charleston



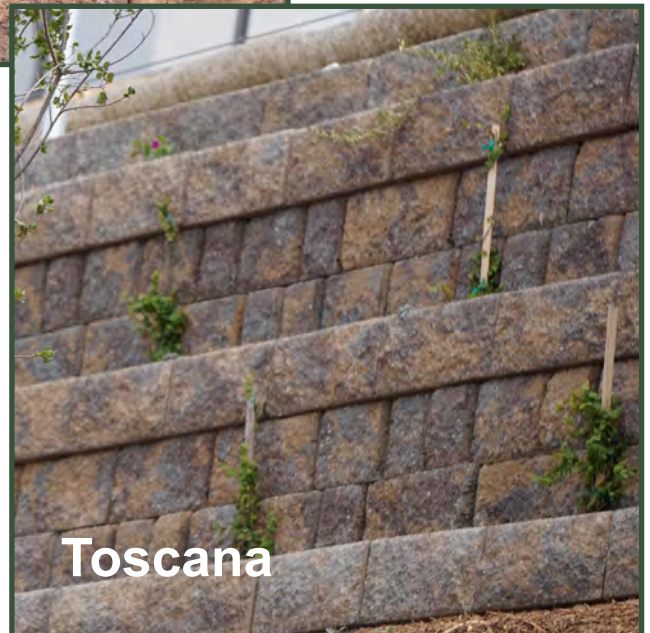
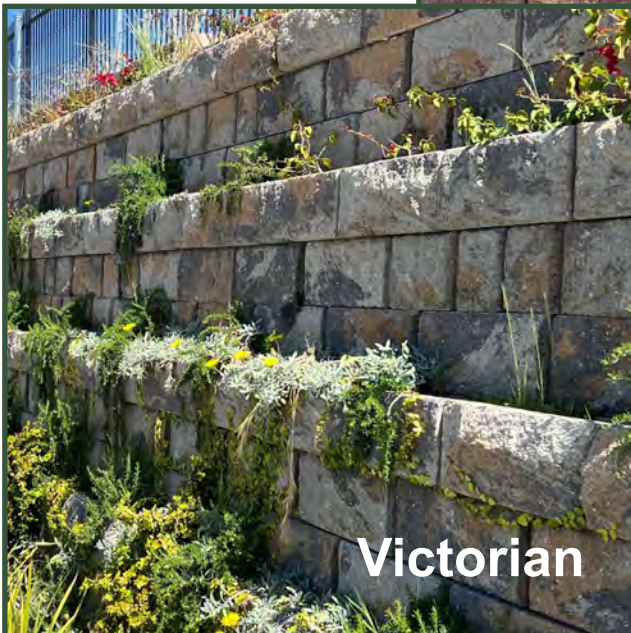
Grey



Tan



COLOR BLENDS



GEOGRID FIELD OPERATIONS TEAM



- **EXPERIENCED**

EXPERIENCED and ORGANIZED

Geogrid has an experienced team and is a leader in the Design/Build of MSE Walls.

- **PROFESSIONAL**

PROFESSIONAL

Our qualified staff is dedicated to maintain high performance standards throughout all stages of each project.

- **SAFETY DRIVEN**

SAFETY DRIVEN

- *Industry leading safety program and safety record*
- *Responsive and collaborative*

- **QUALITY CONTROL**

QUALITY CONTROL

- *Proven Quality control program*

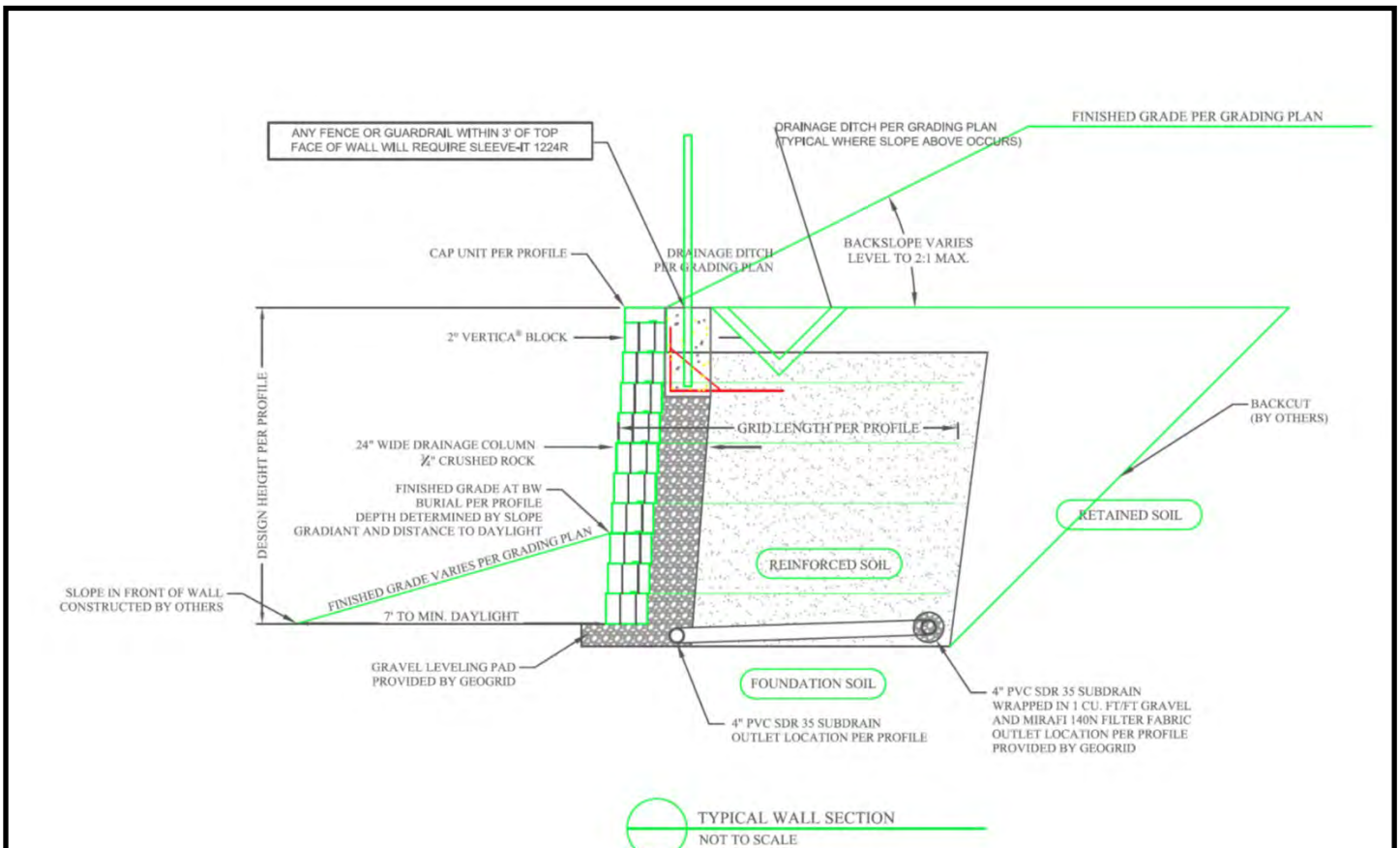


GEOGRID ESTIMATING



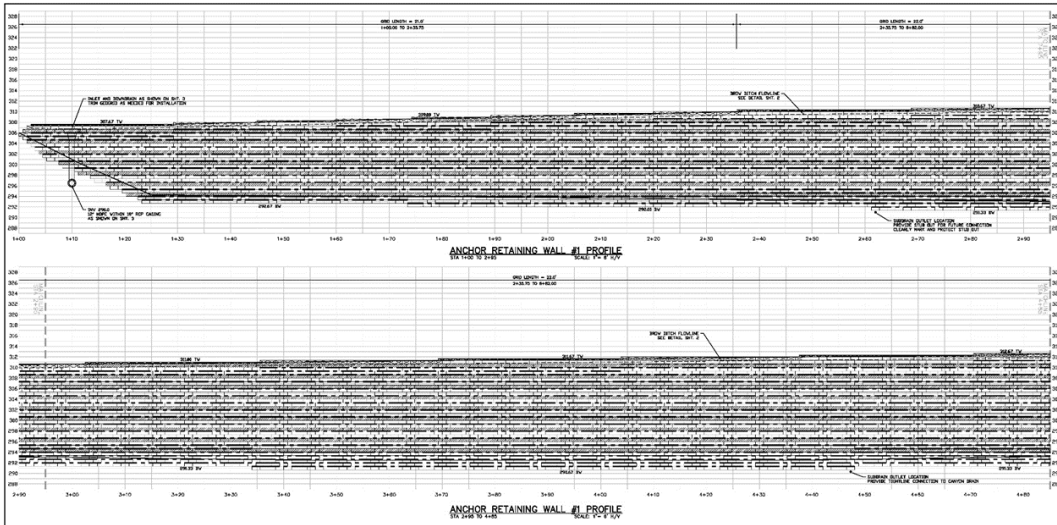
Our partnering approach starts early in order to identify critical site concerns and assess product and design options that best fit budget and project goals from conceptual engineering documents to completed construction.

EXPERIENCED LEADERSHIP THAT PROVIDES OVERSIGHT AND INPUT ON EVERY PROJECT



Typical Wall Section

ENGINEERING



18 Years

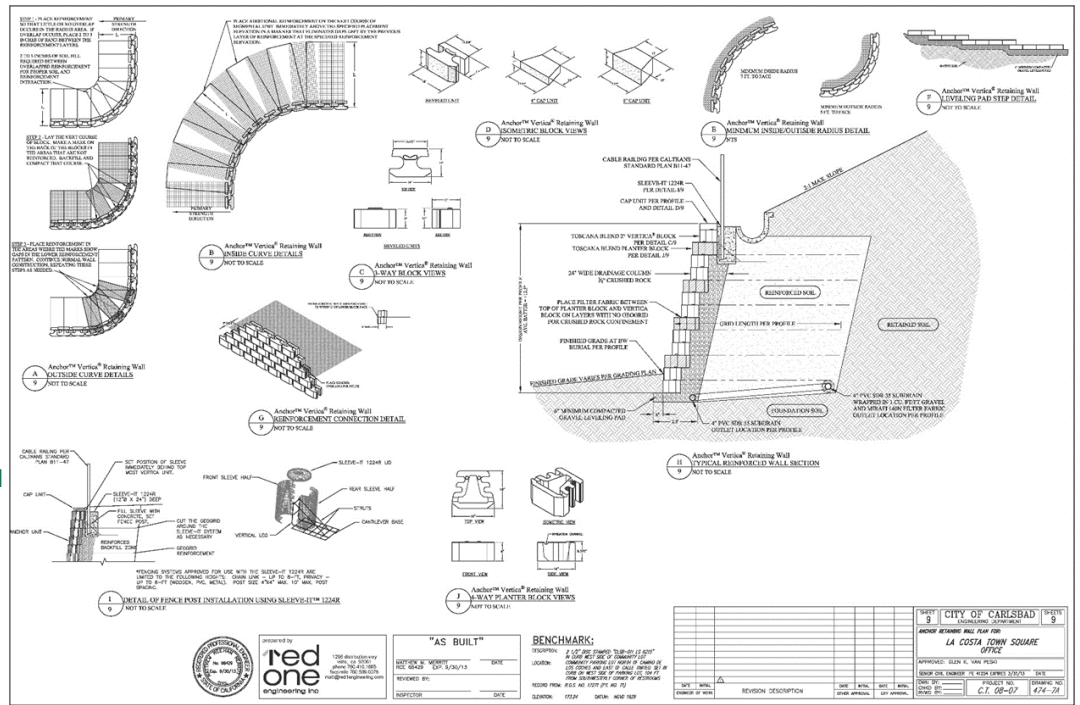
Retaining walls designed and constructed

1000+

Retaining wall plans completed

**15 Million
Square Feet**

Retaining walls designed and constructed

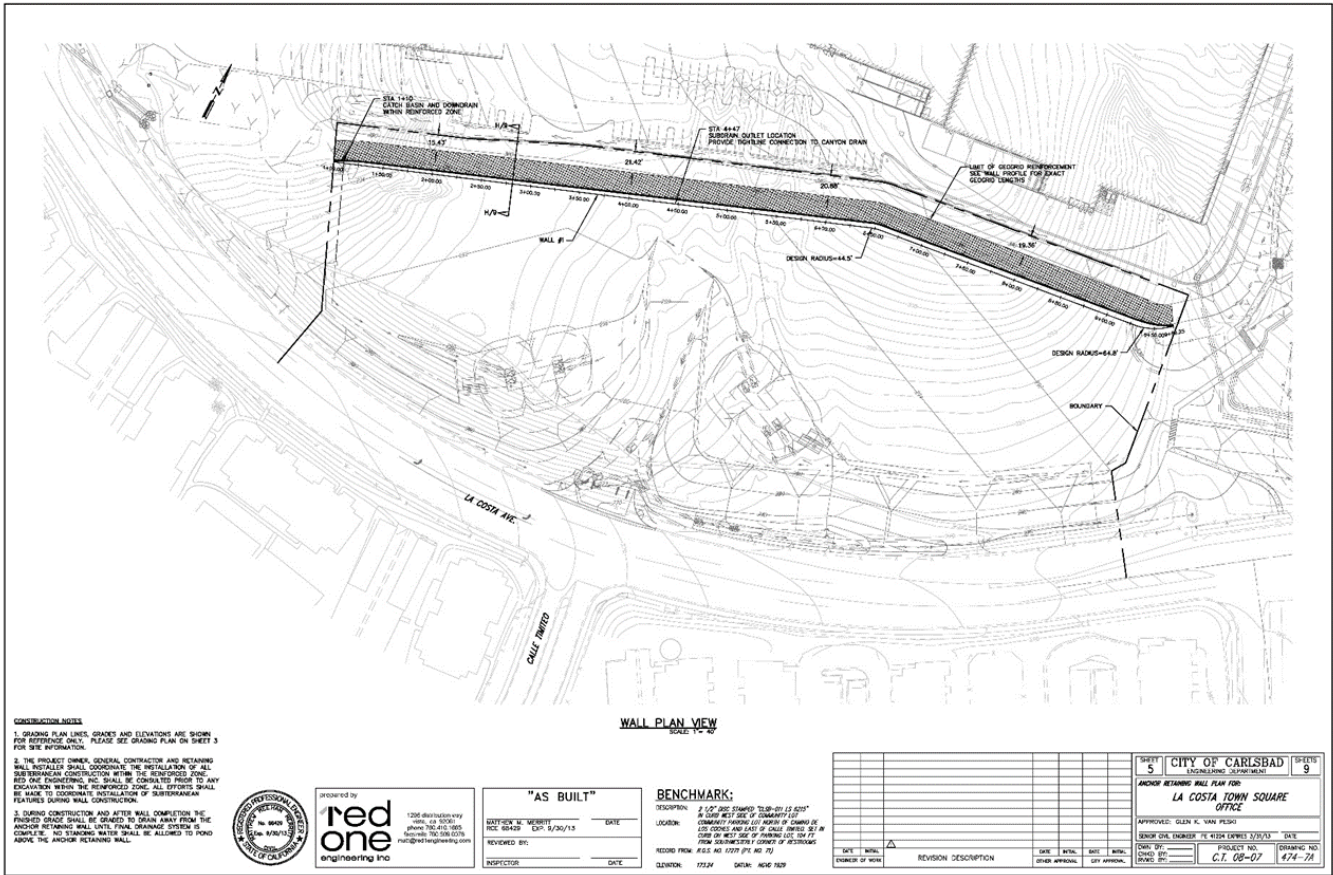


AS BUILT

BENCHMARK

CITY OF CARLSBAD		9
LA COSTA TOWN SQUARE		
OFFICE		
PROJECT NO.	C.P. 09-07	424-21

ENGINEERING



- Complete engineering and design services for Segmental Retaining Wall (SRW), Mechanically Stabilized Earth(MSE) Wall Systems and Wire Basket Walls
- Detailed construction plans including horizontal and vertical control for precise staking
- Structural wall calculations & permitting
- A qualified engineering team experienced with difficult design challenges

LUG LOCATOR PRODUCTS

VERTICA[®] RETAINING WALL SYSTEM

Units	Straight Face	Beveled Face
Approximate Dimensions*	8" x 18" x 11"	8" x 18" x 11"
Approximate Weight*	80 lbs.	78 lbs.
Coverage	1.00 sq. ft.	1.00 sq. ft.
Setback/System Batter	$\frac{3}{32}"$ at 2" or $\frac{9}{16}"$ at 4"	$\frac{3}{32}"$ at 2" or $\frac{9}{16}"$ at 4"

4-degree & special order

VERTICA PRO[®] RETAINING WALL SYSTEM

Units	Straight Face	Beveled Face
Approximate Dimensions*	8" x 18" x 20"	8" x 18" x 20"
Approximate Weight*	115 lbs.	112 lbs.
Coverage	1.00 sq. ft.	1.00 sq. ft.
Setback/System Batter	$\frac{3}{16}"$ /4"	$\frac{3}{16}"$ /4"

VERTICA STONE CUT[®] VIRTUAL JOINT RETAINING WALL SYSTEM

Units	Virtual Joint left	Virtual Joint right	Solid face
Approximate Dimensions*	8" x 18" x 11"	8" x 18" x 11"	8" x 18" x 11"
Approximate Weight*	81 lbs.	80 lbs.	80 lbs.
Coverage	1.00 sq. ft.	1.00 sq. ft.	1.00 sq. ft.
Setback/System Batter	$\frac{3}{32}"$ at 2" or $\frac{9}{16}"$ at 4"	$\frac{3}{32}"$ at 2" or $\frac{9}{16}"$ at 4"	$\frac{3}{32}"$ at 2" or $\frac{9}{16}"$ at 4"

VERTICA, VERTICA PRO & VERTICA STONE CUT PRODUCT ACCESSORY

Accessory	Corner
Approximate Dimensions*	8" x 18" x 9"
Approximate Weight*	101 lbs.
Coverage	1.00 sq. ft. front
Setback/System Batter	0.50 sq. ft. end

*Actual dimensions and weight may vary from these approximate values due to variations in manufacturing processes. Specifications may change without notice. See your Sierra representative for details, color options, block dimensions and additional information.



UNIVERSAL CAP FOR DIAMOND PRO, VERTICA AND LANDMARK PRODUCTS

Units	Beveled Face	Straight Face
Approx. Dims.*	4" x 18" x 12" or 8" x 18" x 12"	4" x 18" x 12" or 8" x 18" x 12"
Approx. Weight*	55 lbs. 102 lbs.	55 lbs. 102 lbs.
Coverage	15 lin. ft./0.5 sq. ft. 15 lin. ft./1.0 sq. ft.	15 lin. ft./0.5 sq. ft. 15 lin. ft./1.0 sq. ft.



ANCHOR[™]
BUILD SOMETHING BEAUTIFUL





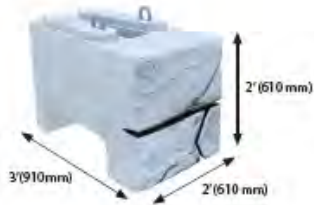
Standard Block
1,755 lbs. (790 kg)



Top Block
1,308 lbs. (590 kg)



Half Block
1,066 lbs. (480 kg)



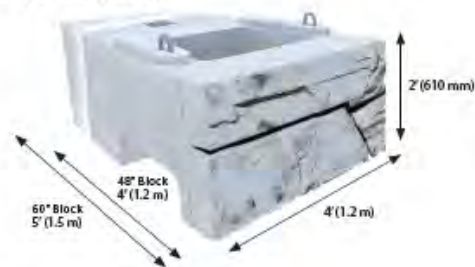
Half Step Block
973 lbs. (440 kg)



Corner Block
1,596 lbs. (720 kg)



Mass Extender
48" Block 2,674 lbs. (1,210 kg)
60" Block 3,509 lbs. (1,590 kg)





Architectural & Retaining Wall Solutions



HW HILFIKER
RETAINING WALLS

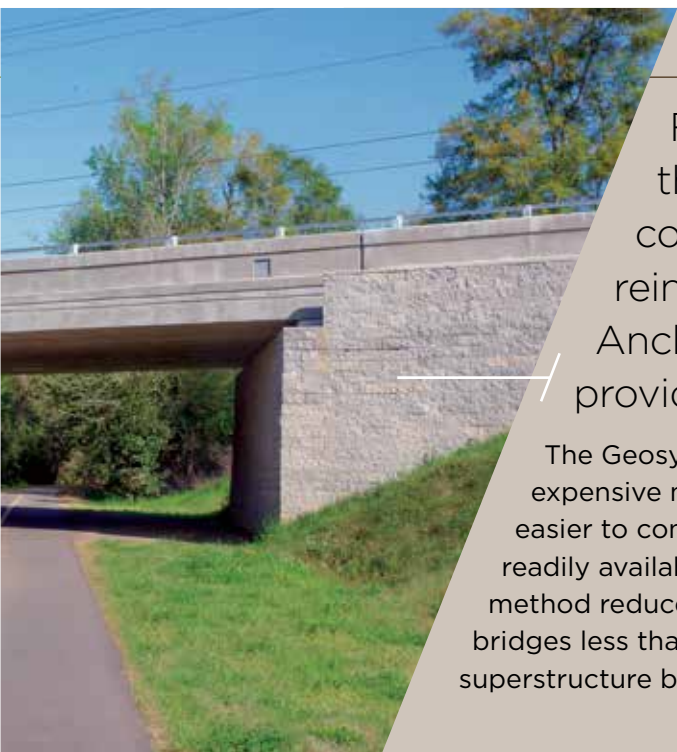


**MSE Panel Walls &
Geofoam Walls**



Specialty Applications

Many wall applications lack sufficient space behind the wall to allow for geosynthetic reinforcement. The **Anchorplex System** eliminates the need for grid-reinforcement. The **Geosynthetic Reinforced Soil-Integrated Bridge System (GRS-IBS)** replaces expensive methods of conventional bridge constructions.



GRS-IBS

For bridge projects with limited time and funds, this proven technology alternates layers of compacted granular fill material and geotextile reinforcement. In combination with the appropriate Anchor™ retaining wall product, this method provides support for the bridge superstructure.

The Geosynthetic Reinforced Soil - Integrated Bridge System replaces expensive methods of conventional bridge construction. Because they are easier to construct due to the simplicity of design, construction speed, use of readily available materials and the elimination of deep foundations, the GRS-IBS method reduces cost by 25-60%. Currently, this method is limited to single-span bridges less than 140 feet long with abutment heights up to 30 feet and a maximum superstructure bearing pressure of 4000 psf.

About the Anchorplex™ System

INNOVATIVE INSTALLATION SOLUTIONS

HOW THE ANCHORPLEX™ SYSTEM WORKS

When used in combination with blocks of the appropriate shape, the self-compacting structural backfill attaches itself to the wall facing, effectively extending the depth and mass of the facing. The structural backfill zone also serves as the required drainage zone directly behind the block facing.

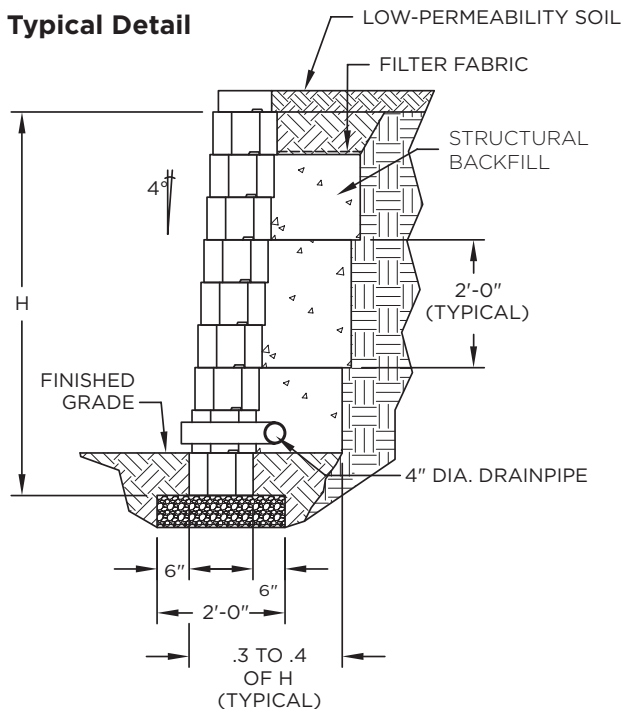
The Anchorplex™ system completely eliminates the need for the construction of a mechanically stabilized earth zone behind the wall facing and requires substantially less excavation than is usually necessary in a grid-reinforced wall construction project.

These projects can be built with smaller equipment, less manpower and better production rates than conventional grid-reinforced walls. While Anchorplex structures are typically greater than 3 feet high, they have been built to heights in excess of 15 feet.

Because of these efficiencies and the design flexibility afforded with this system, millions of square feet of Anchorplex retaining walls have been installed.



Typical Detail



ANCHORPLEX™ MATERIAL SPECIFICATIONS

Structural Backfill

Use an approximate 6:1 or 7:1 ratio of aggregate to cement (by weight). The mixing ratio (by weight) of water to cement should be no more than 1:2.

Facing Block Component

The following Anchor™ retaining wall products can be used to build Anchorplex walls:

- Vertica® products
- Vertica Pro® products
- Vertica Stone Cut® products
- Diamond Pro Stone Cut® products
- Diamond Pro® products
- Highland Stone® products
- Diamond Stone Cut® products
- Diamond® products

SYSTEM SUPPORT

To learn more about this system or to download the specification, construction details and estimating charts, visit the For Professionals section at anchorwall.com.

© 2010 Anchor Wall Systems, Inc. Diamond®, Diamond Pro®, Diamond Pro Stone Cut®, Diamond Stone Cut®, Highland Stone®, Vertica®, Vertica Pro® and Vertica Stone Cut™ wall blocks are manufactured under license from Anchor Wall Systems, Inc. (AWS). The "Anchor Build Something Beautiful" logo, "Anchorplex," "Diamond," "Diamond Pro," "Diamond Pro Stone Cut," "Diamond Stone Cut," "Highland Stone," "Vertica," "Vertica Pro" and "Vertica Stone Cut" are trademarks of AWS. The wall system blocks are covered by the AWS Limited Warranty. For a complete copy, visit your local dealer or see anchorwall.com.

Anchor Wall Systems, Inc., 5959 Baker Road, Suite 390, Minnetonka, MN 55345.
A&B1001

EW820 GEN 05/10

Benefits of Anchor™ Planter Block:

- Incorporate these versatile planter blocks into Vertica®, Vertica Pro® and Diamond Pro® retaining wall systems, or use them alone for the entire wall

2006: The Four Season Resort, Aviara - Carlsbad, CA (Plantable wall with 8:1 batter)



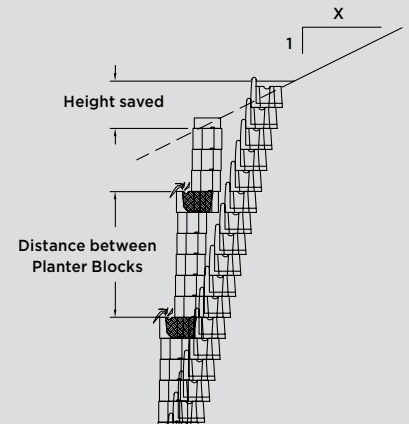
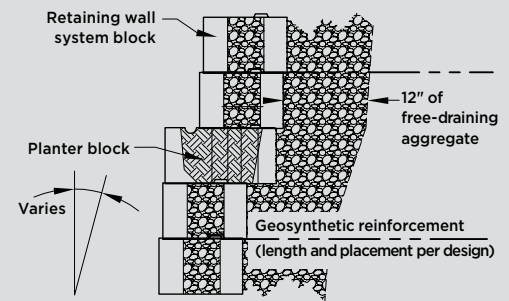
2018: Beautiful planted 32 foot tall wall with a 8:1 batter.



Anchor™ Planter Block

Approximate Dimension: 8" x 18" x 16"

- Setback: 5¾"
- Approximate Weight: 95 lbs.*
- Coverage: 1.0 square feet



**Product dimensions are height by face length by depth. Actual dimensions and weight may vary from these approximate values due to variations in manufacturing processes. Contact your Belgard representative for details.*

Wall Innovations By



Sierra an Oldcastle® company

10714 Poplar Avenue 4202 Gibraltar Court
Fontana, CA 92337 Stockton, CA 95206

For more info visit: www.belgardcommercial.com

Get Social

- [Pinterest.com/Belgard](https://www.pinterest.com/Belgard)
- [Facebook.com/BelgardHardscapes](https://www.facebook.com/BelgardHardscapes)
- [Belgard.com/Blog](https://www.belgard.com/blog)
- [YouTube.com/BelgardHardscapes](https://www.youtube.com/BelgardHardscapes)
- Belgard.com/Enews
- [Twitter.com/Belgard](https://www.twitter.com/Belgard)



**Terraces, Tunnels &
90 Degree Corners**



Stairs, Detention Basins & Plantable Walls



ENGINEERED FOR THE EDGE

Build it right. Build with Sleeve-It.

SLEEVE-IT
by STRATA



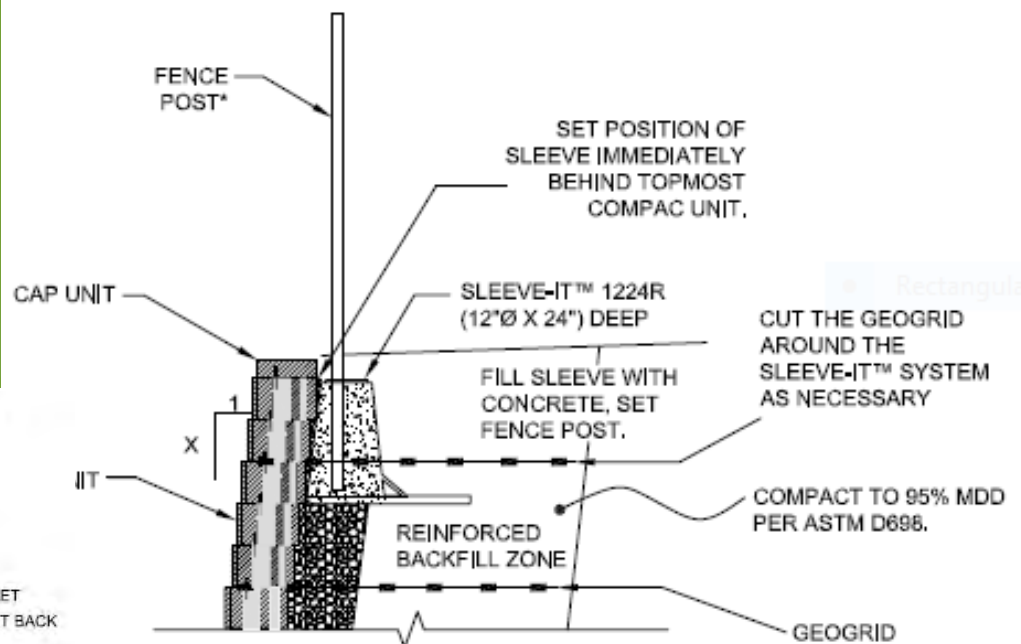
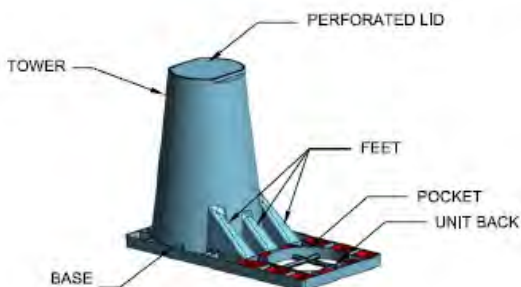
MAXIMIZES LAND USE

Eliminates the offset requirement for rails and fences within 36" of the edge of the open side of an SRW.



COMPATIBLE WITH MOST FENCES

Sleeve-It is designed to accommodate the most common SRW fence types.



Rectangular



Applications include:

- V-Ditches
- Brow Ditches

Specialty Concrete Applications:

- Warped Wing Walls
- Flood Control Channels
- Culverts and Inlet Aprons
- Slope Paving

We provide:

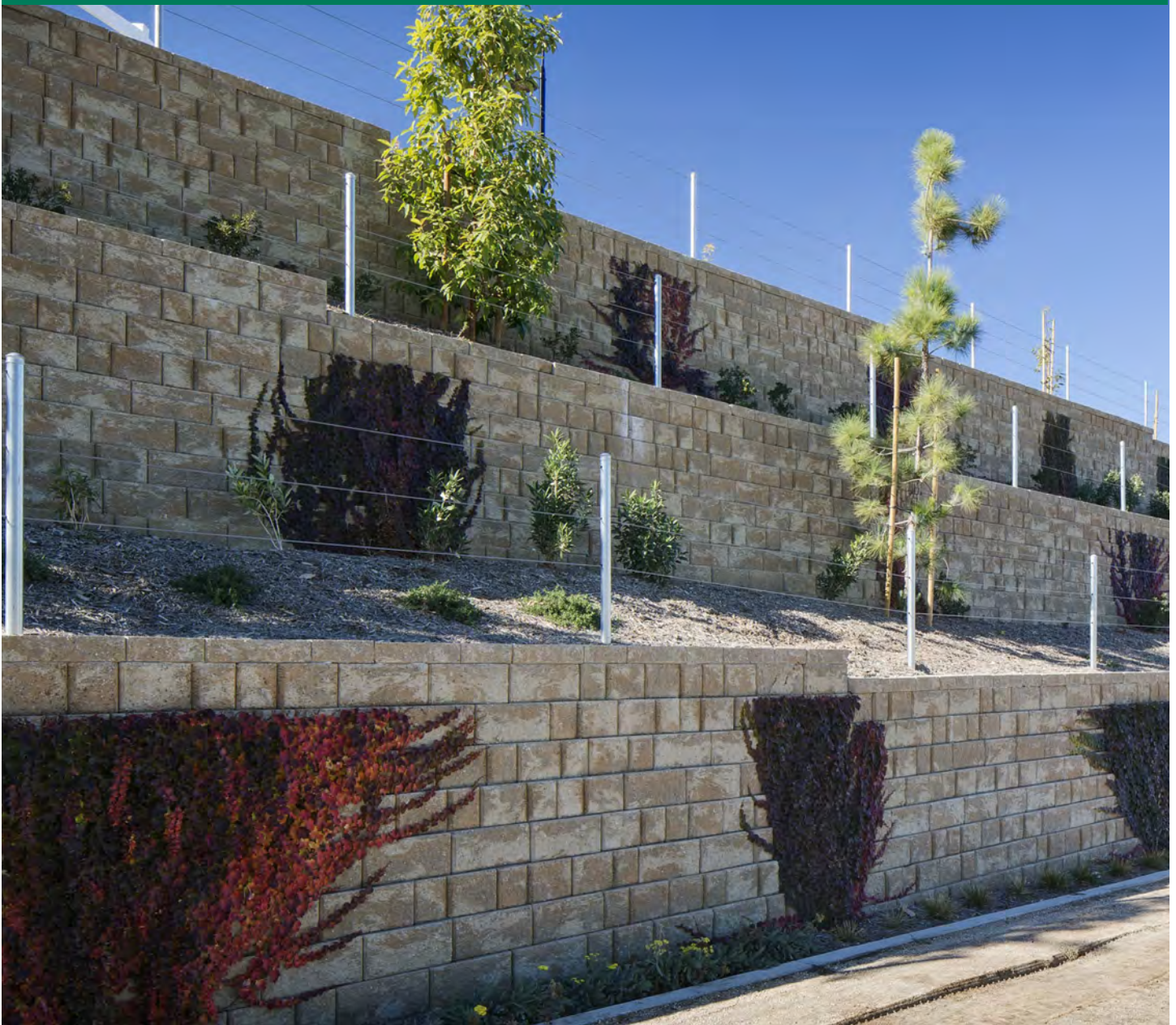
- Competitive pricing
- On-time scheduling
- High quality workmanship
- Responsive and resourceful office personnel and field support.

We own a fleet of backhoes, excavators and ditch buckets. Geocrete has a proven Quality Control and Safety Program available upon request.

*Committed,
Competitive,
Experienced*



THE **LARGEST** SEGMENTAL RETAINING WALL INSTALLER IN CALIFORNIA



In Business

SINCE 1992

12 Million

SQUARE FEET INSTALLED

50 Feet

OUR TALLEST WALL INSTALLED



www.geogridwalls.com

1295 Distribution Way Vista, CA 92081 PHONE 760-509-0079 FAX 760-509-0078
CA License # 661527 A, B, C-8